

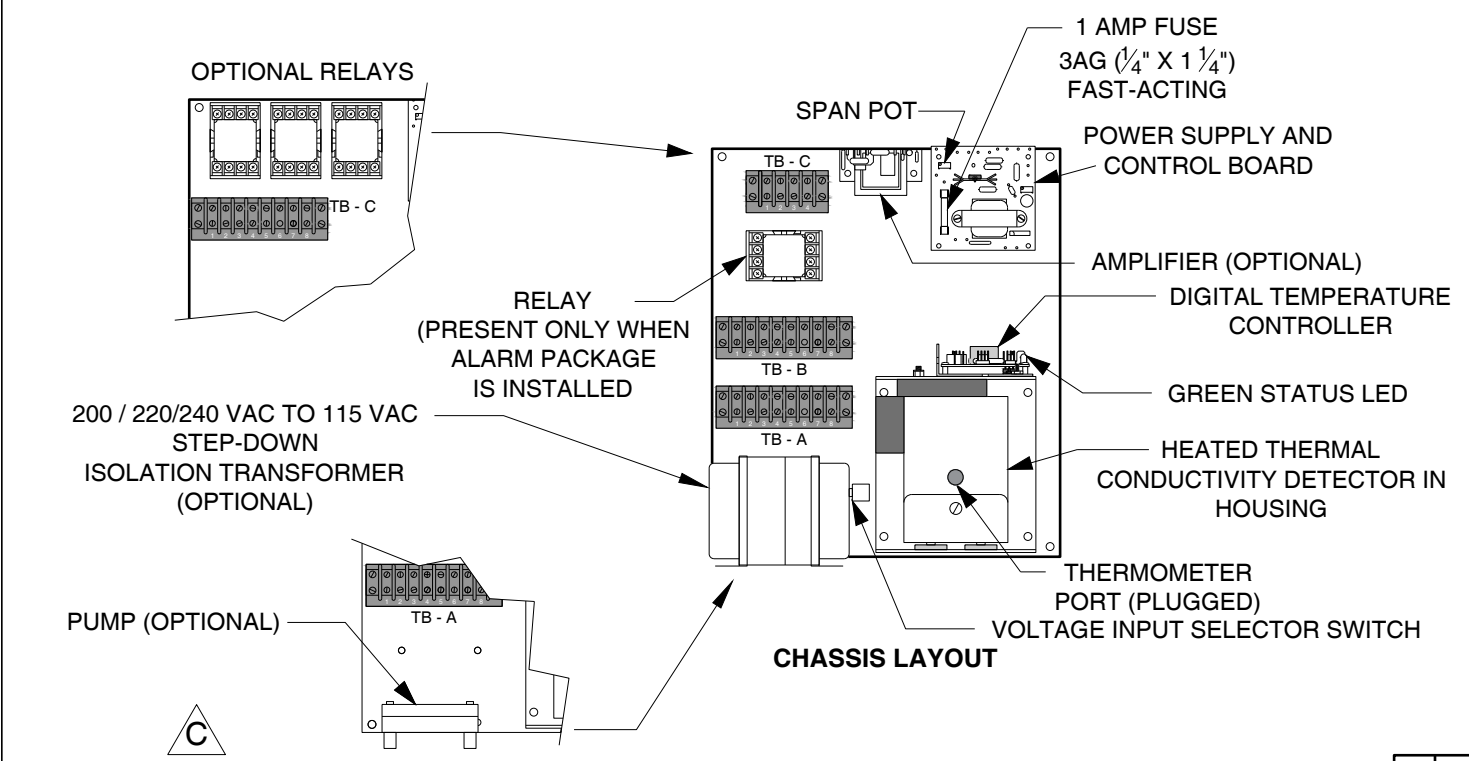
LEFT SIDE VIEW

FRONT VIEW WITH DOOR CLOSED

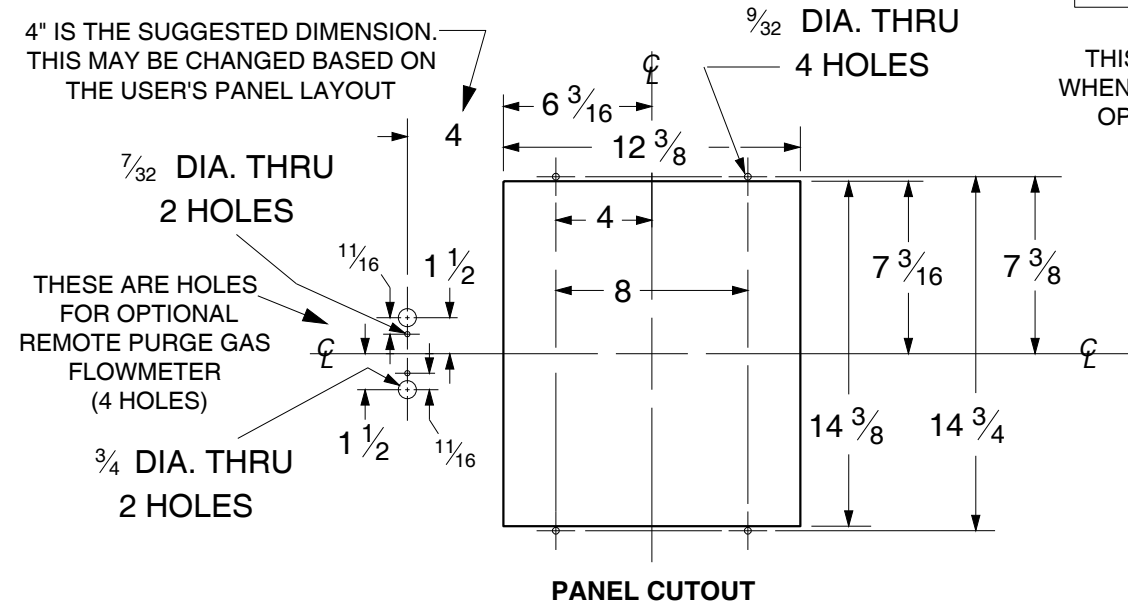
FRONT VIEW WITH DOOR REMOVED

RIGHT SIDE VIEW

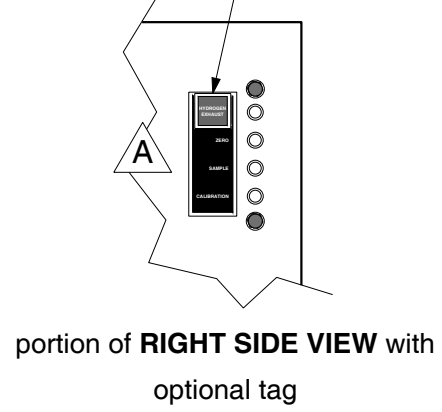
**NOTE:**  
GAS ANALYZER REQUIRES 14 INCHES OF CLEARANCE FOR DOOR SWING.



OPTIONAL PUMP LOCATION



THIS TAG IS PROVIDED WHEN PURGE FLOWMETER OPTION IS SELECTED



- NOTES:**
- ALL DIMENSIONS ARE IN INCHES UNLESS OTHERWISE INDICATED.
  - REFER TO DATA SHEET TO DETERMINE WHICH OPTIONS ARE PRESENT.
  - WHEN FILTER AND/OR PURGE FLOWMETER IS SUPPLIED, USER MUST REMOVE FILTER/BRACKET AND/OR PURGE FLOWMETER PORTS TO INSTALL GAS ANALYZER IN PANEL BEFORE REINSTALLING THE FILTER/BRACKET AND/OR PURGE FLOWMETER.

REVISIONS	BY	DATE
C	GAR	8-31-20
B	KGR	3-16-15
A	GAR	3-13-12

	INSTRUMENT CORPORATION LA PORTE, INDIANA USA	DATE: 5-23-11 SCALE: N.T.S.
	<b>INSTRUCTION DRAWING FOR          MODEL 7000 GAS ANALYZER</b>	DRAWN BY: JE APPROVED BY: GAR SUPERSEDES: 2-10686 DRAWING NUMBER: <b>2-13357</b>