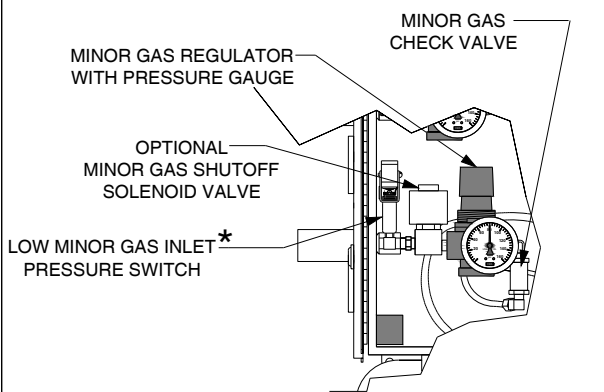
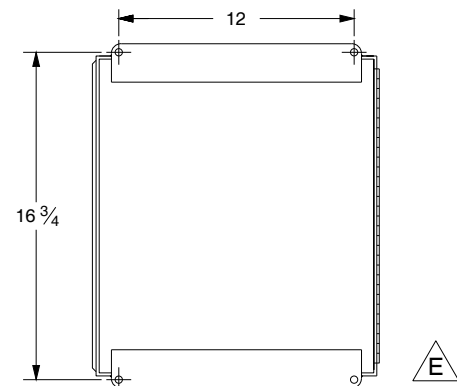


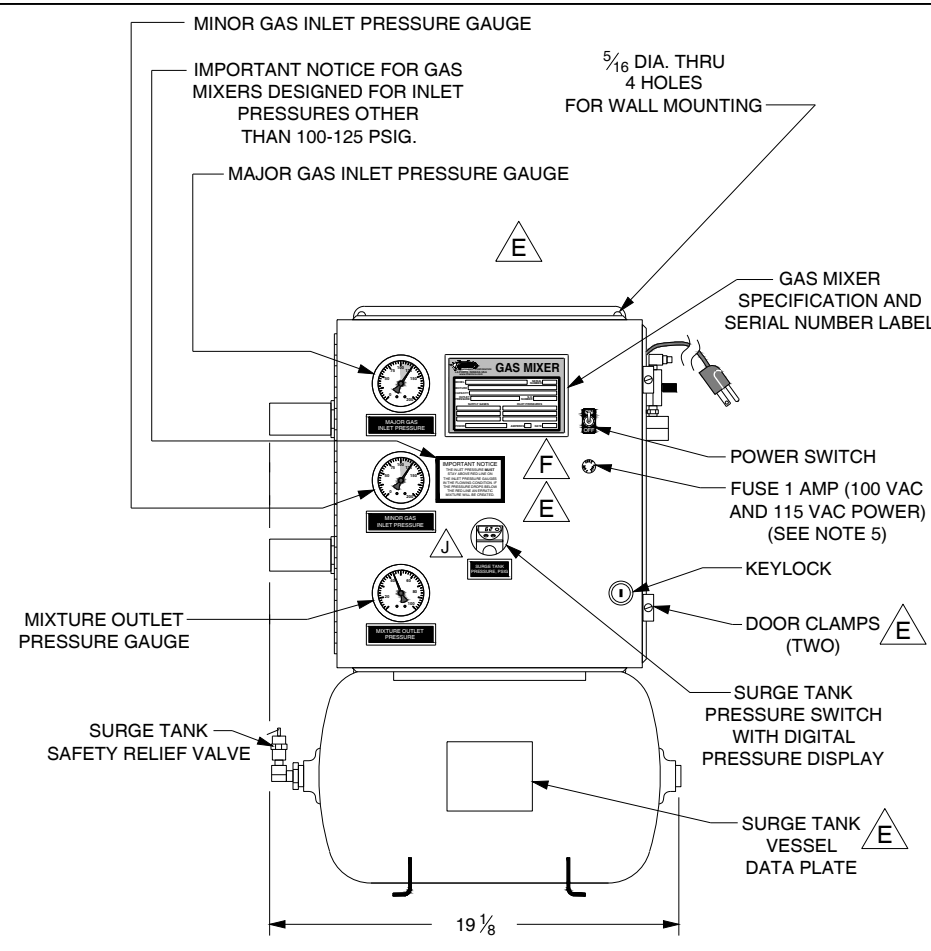
LEFT END VIEW



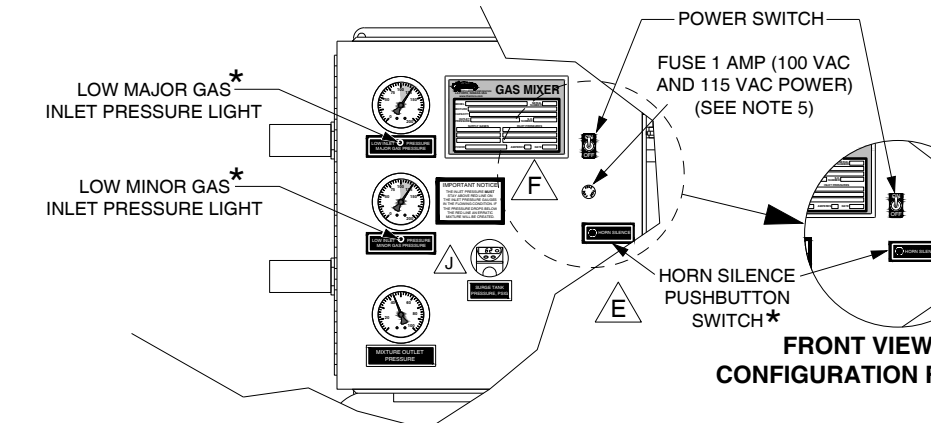
PARTIAL FRONT VIEW WITH DOOR OPEN AND OPTIONAL MINOR GAS SHUTOFF SOLENOID VALVE



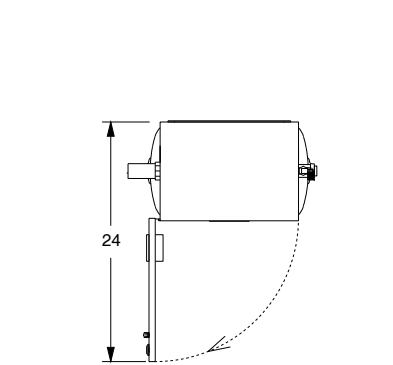
REAR VIEW OF ENCLOSURE SHOWING WALL MOUNT DIMENSIONS



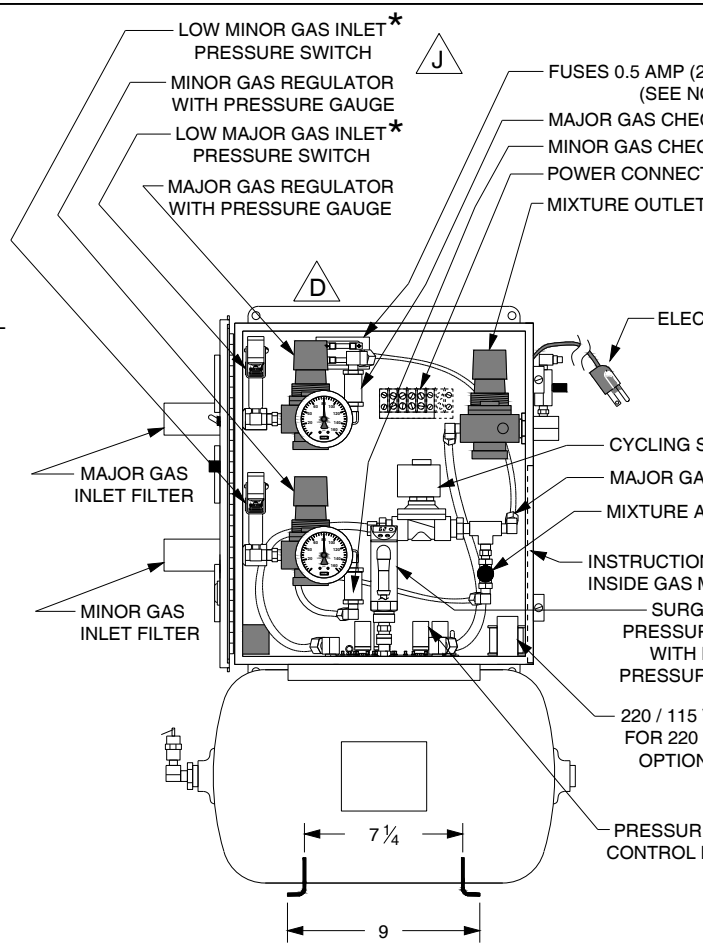
FRONT VIEW WITH DOOR CLOSED



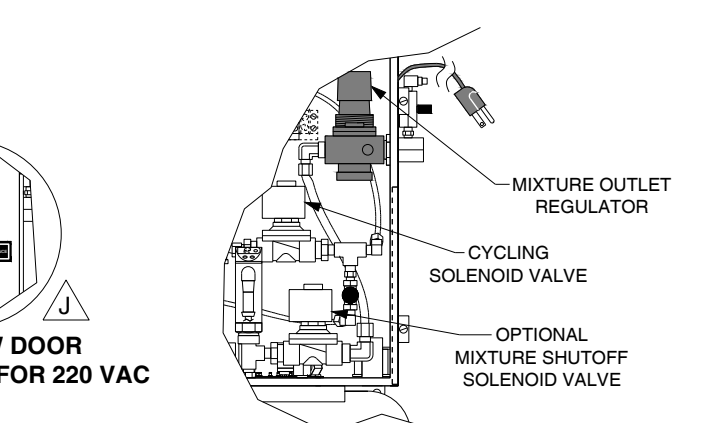
PARTIAL FRONT VIEW WITH DOOR CLOSED AND OPTIONAL PRESSURE ALARM SYSTEM INSTALLED



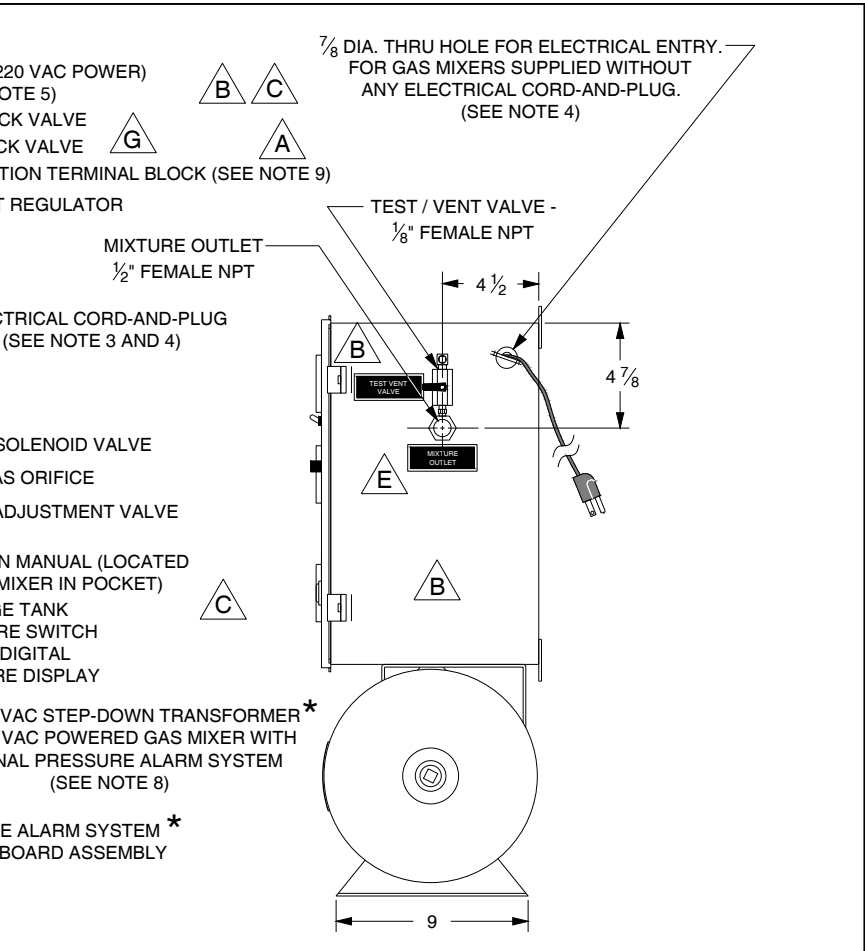
TOP VIEW SHOWING REQUIRED SWING CLEARANCE FOR DOOR



FRONT VIEW WITH DOOR OPEN



PARTIAL FRONT VIEW WITH DOOR OPEN AND OPTIONAL MIXTURE SHUTOFF SOLENOID VALVE



RIGHT END VIEW

- NOTES:
- DIMENSIONS ARE IN INCHES AND ARE APPROXIMATE.
 - REFER TO THE DATA SHEET FOR THE MAJOR AND MINOR GASES.
 - ELECTRICAL PLUG CONNECTION SHOWN IS FOR 100 VAC AND 115 VAC, WITH A CORD LENGTH OF 9 FEET.
 - 220 VAC VERSION IS SUPPLIED WITHOUT ANY ELECTRICAL CORD-AND-PLUG.
 - FUSES ARE TYPE 3AG 1/4" X 1 1/4" FAST-ACTING.
 - THE PRESSURE ALARM SYSTEM, MIXTURE SHUTOFF SOLENOID VALVE AND MINOR GAS SHUTOFF VALVE ARE OPTIONAL. REFER TO THE DATA SHEET FOR ACTUAL OPTIONS.
 - * 7. ITEMS MARKED WITH AN ASTERISK (*) ARE PARTS OF THE OPTIONAL PRESSURE ALARM SYSTEM.
 - THE 220/115 VAC STEP-DOWN TRANSFORMER IS INSTALLED IN GAS MIXERS POWERED BY 220 VAC ONLY WHEN MANUFACTURED WITH THE OPTIONAL PRESSURE ALARM SYSTEM.
 - POWER CONNECTION TERMINAL BLOCK IS 4-POSITION FOR 100 AND 115 VAC POWER AND 6-POSITION FOR 220 VAC POWER.
 - INTERNAL FLOW COMPONENTS SHOWN ARE TYPICAL. ACTUAL FLOW COMPONENTS AND LOCATIONS MAY VARY FOR SPECIAL GAS MIXERS. REFER TO THE DATA SHEET.

REVISIONS	BY	DATE
J	GAR	5-8-19
H	DMR	9-12-18
G	DMR	6-27-17
F	DMR	2-17-15
E	GAR	11-14-14
D	DMR	10-6-14
C	DMR	12-22-05
B	GAR	10-4-05
A	GAR	7-16-03

Thermco INSTRUMENT CORPORATION
LA PORTE, INDIANA USA

DATE: 5-20-03
SCALE: N.T.S.
DRAWN BY: BB
APPROVED BY: GAR
SUPERSEDES: 1-10971, 1-12113
DRAWING NUMBER: 2-12256

INSTRUCTION DRAWING FOR MODELS 8510 AND 8515 GAS MIXERS