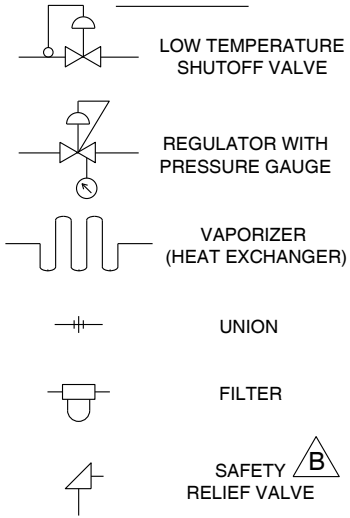
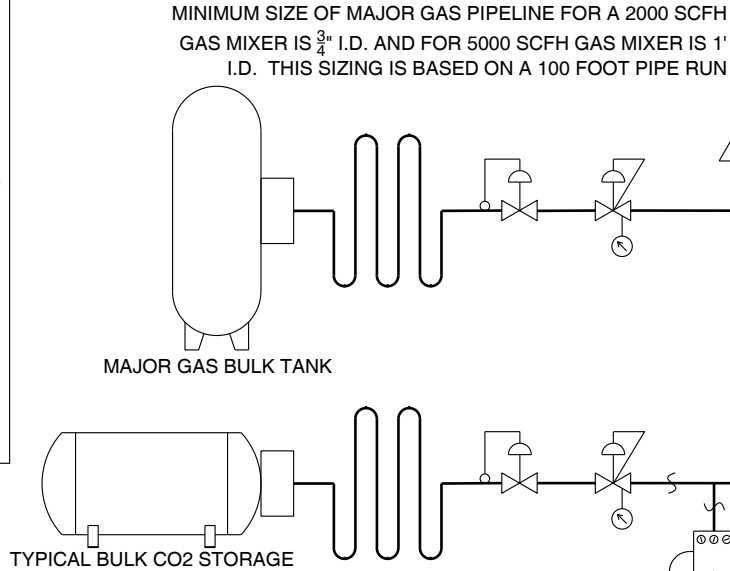


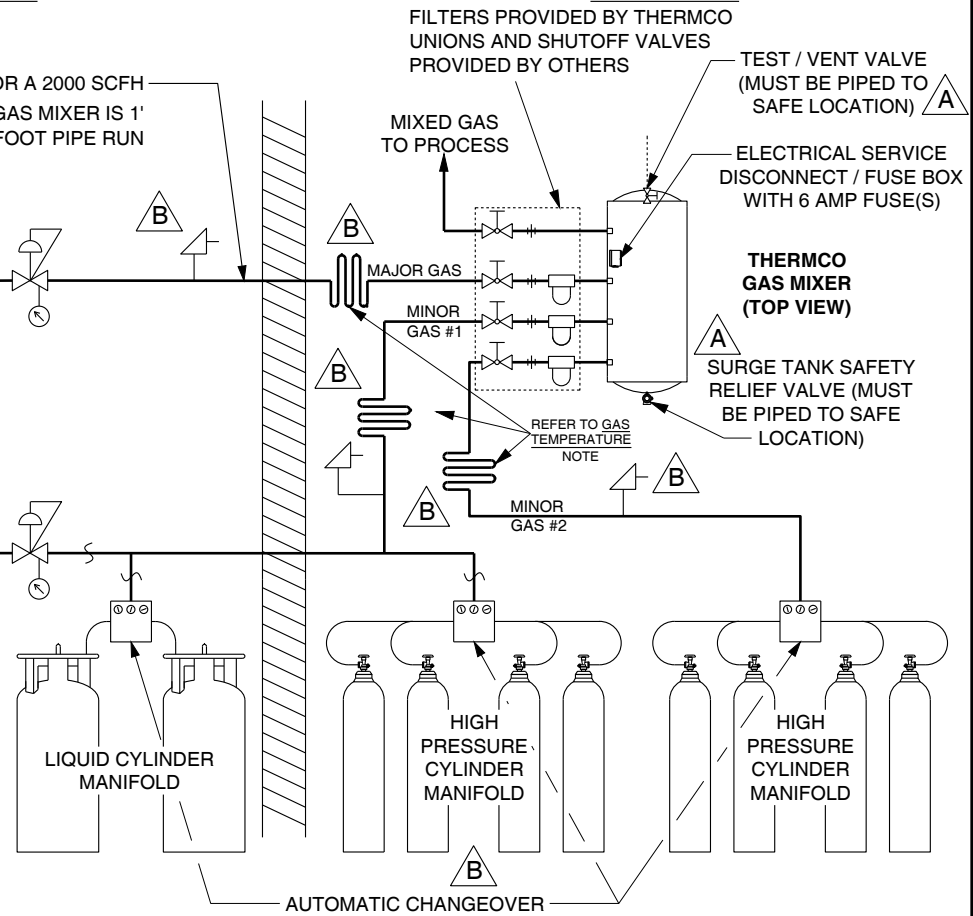
LEGEND



OUTDOORS



INDOORS



NOTES:

GAS SUPPLY: Normally a bulk storage vessel is necessary for the major gas supply. Three choices for the minor gas #1 supply are shown; only one is necessary. B

PIPING: Piping should be chosen with consideration for the pressure and chemical nature of the gas, sized large enough to deliver the proper pressure to the gas mixer under flowing conditions. See Recommended Inlet Pipeline Sizes in the Gas Mixer Instructions. B

CLEARANCE: Leave at least 1 1/2 feet clearance to both sides, and 2 feet to front, top and rear of gas mixer.

POWER REQUIREMENTS: Gas mixers made for installation in the U.S. and Canada will require 115 VAC (±10 VAC), 60 Hz, 1 Ø. For gas mixers for other locations, see Instruction Manual for power requirements.

GAS TEMPERATURE: The three supply gases should enter the gas mixer at nearly equal temperatures to achieve the proper mixing accuracy. If the gas supplies will be at significantly differing temperatures, the resultant mixing inaccuracy should be considered and the proper corrective action taken. Design to prevent exposure of the gas mixer to high pressures or liquid gases should be practiced. An ambient heat exchanger located indoors with the gas mixer may be required to maintain the specified typical supply gas temperature range of 32°F - 104°F (0°C - 40°C) at the gas mixer and will provide the best gas mixer performance. However, some gas mixers require a special temperature range, such as 50°F - 90°F (10°C - 32.2°C). See Gas Mixer Special Instructions for special requirements. B

SAFETY RELIEF VALVE: Refer to the gas mixer Instruction Manual for recommended supply gas relief valve pressure settings. B

B	REDRAWN IN AUTOCAD; GENERAL IMPROVEMENTS INCLUDING; SUPPLY GAS RELIEF VALVES; GAS TEMPERATURE SPECIFICATIONS AND RELATED REQUIREMENTS; ADDED NON-WEATHERPROOF TO TITLE	GAR	5-28-20	<p>INSTRUMENT CORPORATION LA PORTE, INDIANA USA</p>	DATE: 6-21-93
	ADDED SURGE TANK SAFETY RELIEF VALVE; ADDED PIPING NOTE TO TEST/VENT VALVE; TANK WAS NOT VISIBLE UNDER PLATFORM	GAR	1-26-12		TITLE: RECOMMENDED INSTALLATION OF NON-WEATHERPROOF THREE GAS MIXER MODELS 8110, 8115, 8210 & 8215
REVISIONS				BY	DATE
					DRAWN BY: JTM
					APPROVED BY: <i>BAR</i>
					SUPERSEDES:
					DRAWING NUMBER: 1-10656